

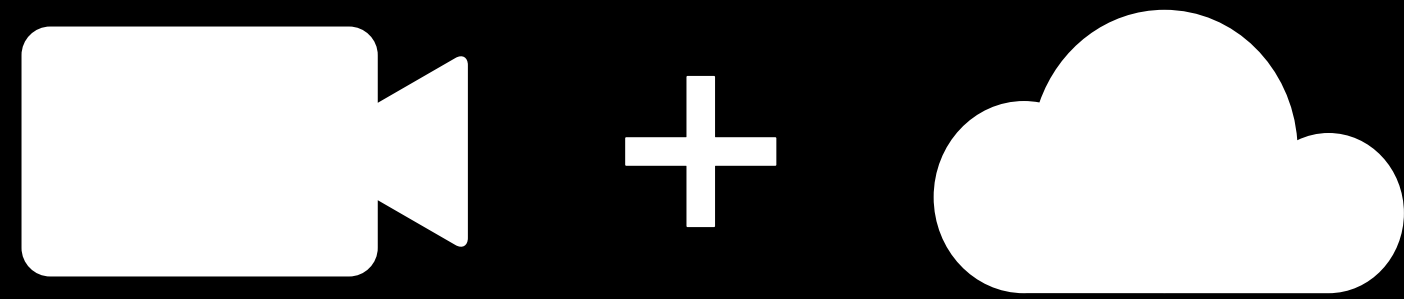
CROSS 1

Smart road system
CROSS 1
(Smart crosswalk)

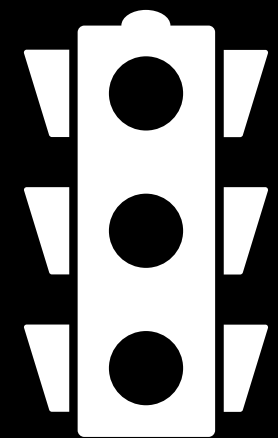
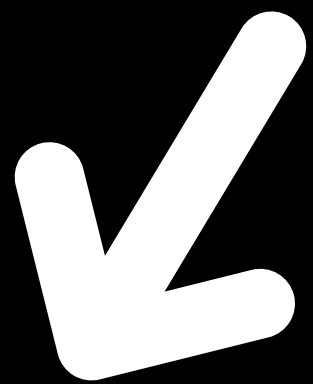
cross1.city



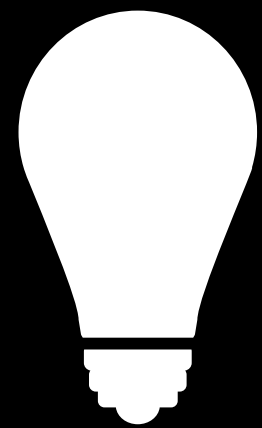
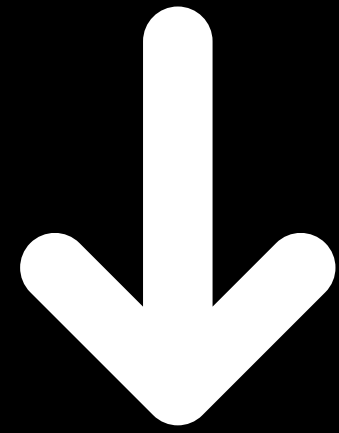
CROSS 1 – solution



CROSS 1 - AI based pedestrian system, tracking more than a dozen factors simultaneously for multifactoral decisions



Traffic lights



City lights



LED crosswalks

CROSS 1 rules the road infrastructure

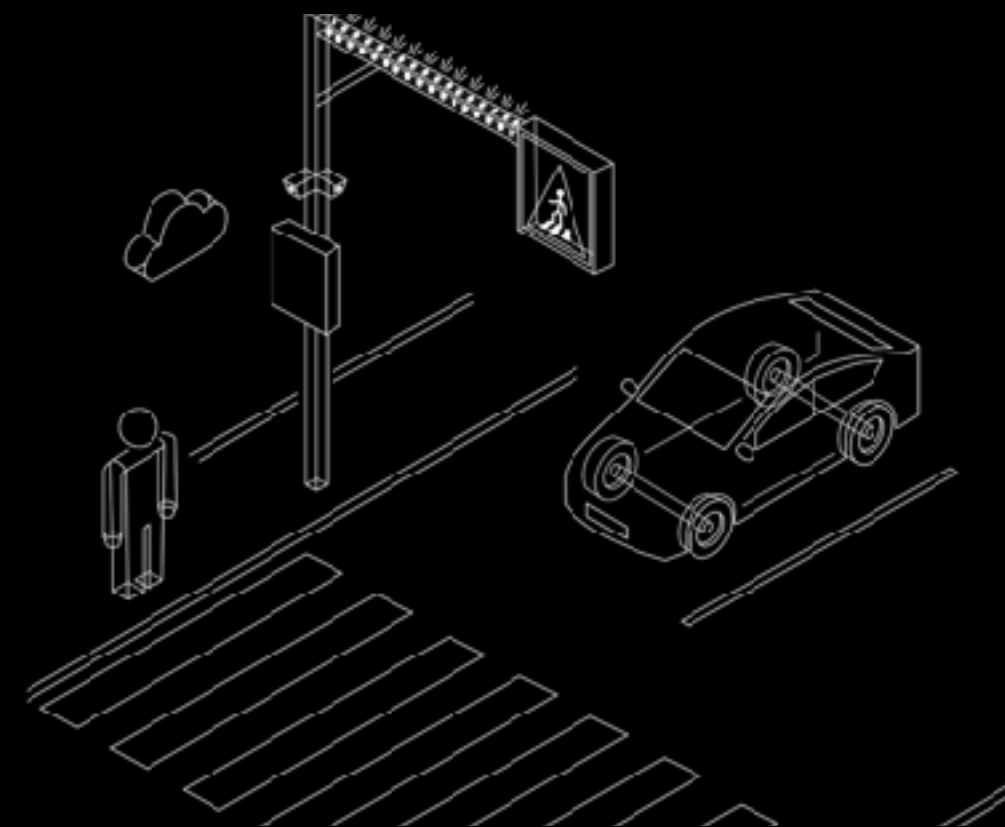
CROSS 1 — customer's experience

Crosswalk with traffic lights

- Adaptive green for pedestrians
- «Stacking» pedestrians during traffic hours
- Differentiated green for pedestrian categories: kids, disabled, blind etc
- Accounting for weather and surface conditions for more precise green time



CROSS 1



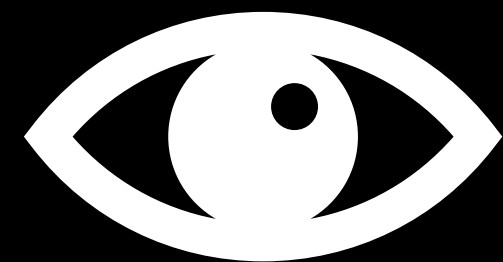
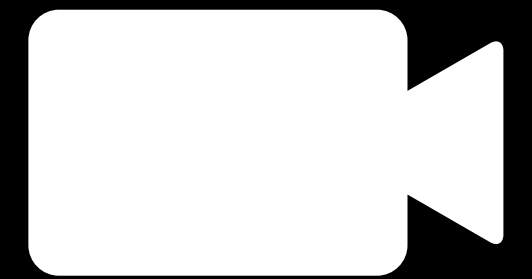
Crosswalk without traffic lights

- Warning drivers of pedestrians coming through controllable devices

CROSS 1 – system architecture

Video module

- Cameras with IK matrix
- 50 meters (150 ft) vision distance



Recognition module

- 99% minimal accuracy
- Pedestrian speed and trajectory recognition

Analytics module

- Pedestrian count
- Categorisation (kids, disabled, blind)
- Multifactoral decision making





Умный
город

№1

**CROSS 1 - the only pedestrian solution
approved by Ministry of Construction of
Russian Federation for
SMART CITIES**



CROSS 1 - types of controlled devices



CROSS 1



Traffic lights



Zebra projection



LED signs

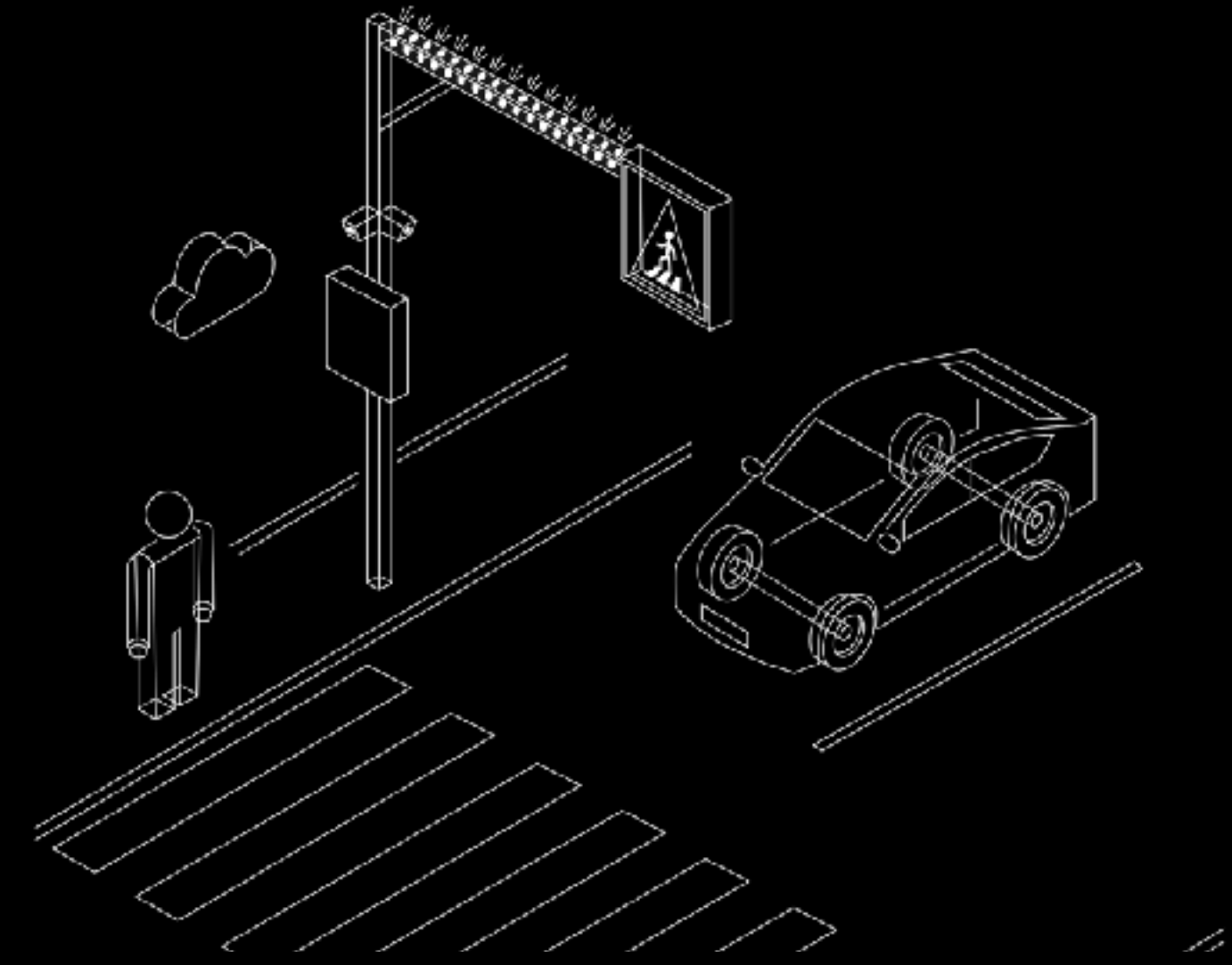
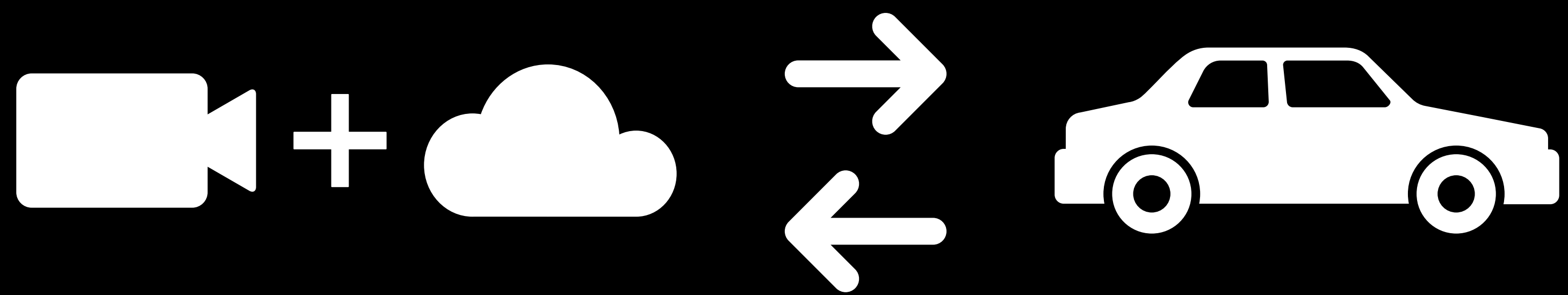


Signs projection



LED stripes

CROSS 1 – future insights



**CROSS 1 can be further upgraded as a V2X infrastructure element:
Sending warning of pedestrians directly to the vehicle driving computer**

Thank you

Egor Kaparulin +7-967-909-4-666
cross1.city